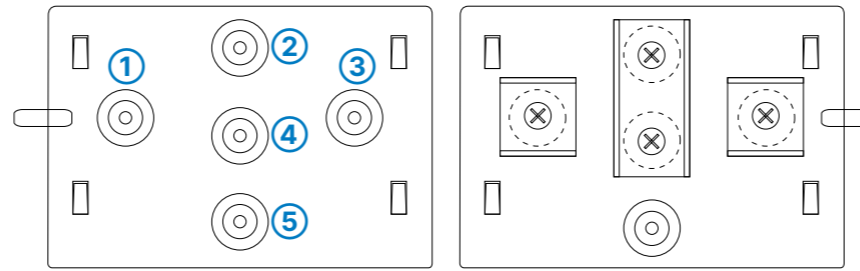
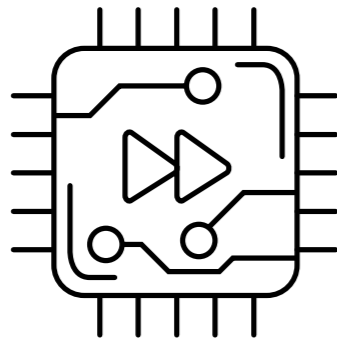


## Mounting & connecting

# Hardware Quick Reference LANCOM IAP-5G



### Wall mounting

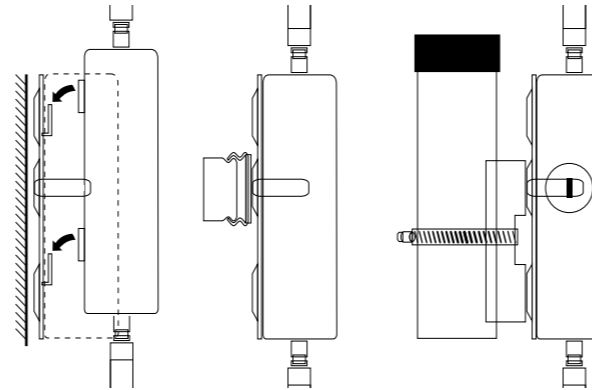
Use the supplied screws to fix the back plate to the wall using the holes ①, ③, and ⑤.

### Top-hat rail mounting

(with the separately available IAP Mount, item no. 61647)  
Using the supplied screws, attach the two top-hat rail clips to the holes ① and ③. Do not yet tighten the screws completely; leave some space to adjust the alignment of the clips. Snap the two top-hat rail clips onto the required position on the top-hat rail.

### Pole mounting

(with the separately available IAP Mount, item no. 61647)  
For pole mounting, use the supplied screws to fix the clamp profile through the holes ② and ④. Place the enclosed mounting clamp or a mounting clamp suitable for your pole diameter around the clamping profile. Then mount the device with the mounting clamp at the desired position on the pole.



Snap the housing of the device with the four rear openings into the tabs of the base plate.

### Optional: Secure with a Kensington lock

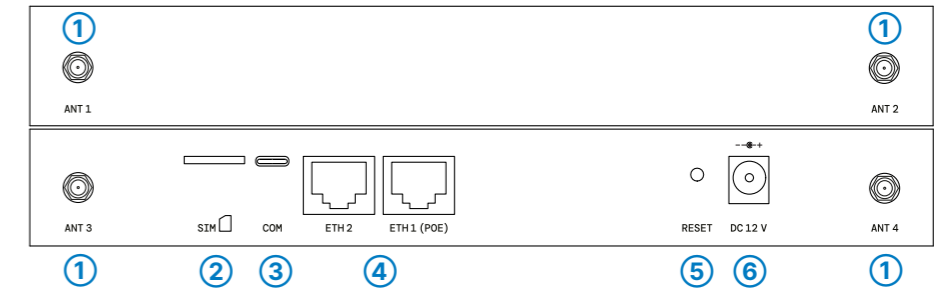
The left side of the device features a slot for a Kensington lock. The Kensington lock securely fixes the device to the mounting plate.

**Before initial startup, please make sure to take notice of the information regarding the intended use in the enclosed installation guide!**

**Operate the device only with a professionally installed power supply at a nearby power socket that is freely accessible at all times.**

**The power plug of the device must be freely accessible.**

**Antennas and SIM cards are only to be attached or exchanged when the device is switched off. Mounting or demounting antennas while the device is switched on may cause the destruction of the radio module!**



① **5G antenna connectors**  
Screw the supplied antennas to the connectors ANT 1 - ANT 4.

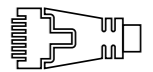
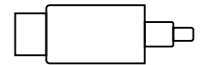
② **Micro SIM card slot**  
When inserting the SIM card, pay attention to the marking for the correct position. Make sure that the card clicks into place in the slot. To remove the card, press it lightly into the slot. This releases the card from the locked position in the slot.

③ **Serial USB-C configuration interface**  
A USB-C cable can be used for optional configuration of the device on the serial console. (cable not included)

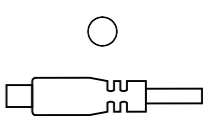
④ **TP Ethernet interfaces**  
Use the Ethernet cable to connect one of the interfaces ETH1 (PoE) or ETH2 to other network components. Alternatively, you can connect the ETH1 (PoE) interface to a PoE injector's 'Power Out' connector.

⑤ **Reset button**  
Pressed up to 5 seconds: device restart  
  
Pressed until first flashing up of all LEDs: configuration reset and device restart

⑥ **Power supply connector**  
Use only the supplied power adapter!



RESET



### Please observe the following when setting up the device

- To prevent the device from overvoltage damage, an overvoltage-protected power supply is strongly recommended.
- Do not rest any objects on top of the device
- Keep all ventilation slots of the device clear of obstruction
- Please note that support service for third-party accessories is excluded.



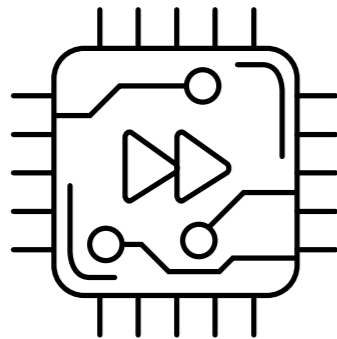
LANCOM  
SYSTEMS



Cloud-ready

## LED description & technical details

# Hardware Quick Reference LANCOM IAP-5G



### A ETH2, ETH1

Off	No networking device attached
Green, permanently	Connection to network device operational, no data traffic
Green, flickering	Data traffic

### B VPN

Off	VPN connection not active
Green, permanently	VPN connection active
Green, blinking	VPN connection establishment

### C SIGNAL

Off	No cellular reception
Green, permanently	Good signal strength, greater than or equal to -70 dB
Orange, permanently	Medium signal strength, field strength between -86 and -71 dB
Orange, blinking	Low signal strength, field strength less than -87 dB

### D 5G

Off	Cellular interface disabled
Green, permanently	Connection to cellular network active
Green, flickering	Cellular data transfer
Orange, permanently	Logon to cellular network successful
Orange, blinking	Logging on to cellular network
Red, permanently	Hardware error/module unavailable
Red / green, blinking	SIM card error (PIN)
Red / orange, blinking	Uploading module firmware

### E Power

Off	Device switched off
Green, on (constant)	Device operational
Green, blinking	Configuration password not set. Without a configuration password the configuration data in the device is unprotected.
Red, blinking	Charge or time limit reached
1x green inverse blinking*	Connection to the LMC active, pairing OK, device not claimed
2x green inverse blinking*	Pairing error, resp. LMC activation code not available
3x green inverse blinking*	LMC not accessible, resp. communication error

## Hardware

Power supply	12 V DC, external power adapter For an overview of the power supplies compatible with your device, see <a href="http://www.lancom-systems.com/kb/power-supplies">www.lancom-systems.com/kb/power-supplies</a> ;
Power consumption	Max. 12 W via 12 V power supply, Max. 12 W via PoE Via Power-over-Ethernet compliant to IEEE 802.3at
Environment	Temperature range -20 to +50 °C; humidity 0-95 %, non-condensing
Housing	Robust metal housing, IP 50 protection class, for wall, mast and top-hat rail mounting, 210 mm x 152 mm x 33 mm (L x W x D), weight approx. 1.1 kg (without mounting materials)

## Interfaces

ETH1	10 / 100 / 1000 Mbps auto-sensing, PoE as per IEEE 802.3at
ETH2	10 / 100 / 1000 Mbps, autosensing
External antenna connectors	4 SMA connectors
Configuration interface	Serial USB-C configuration interface

## Data transmission in cellular networks - supported standards and power (dBm)

LTE / LTE Advanced E-UTRA	Band 1: 24.0; band 3: 24.8; band 7: 24.8; band 8: 24.0
5G	NR NSA DC 1A_n78: 24.5

## Package content

Cable	Ethernet cable, 3 m (not included with bulk items)
Antennas	4 5G / 4G antennas for 5G / LTE
Power adapter (Not included with bulk item)	External power adapter (not for WW devices)

\*) The additional power LED statuses are displayed in 5-seconds rotation if the device is configured to be managed by the LANCOM Management Cloud.

This product contains separate open-source software components which are subject to their own licenses, in particular the General Public License (GPL). The license information for the device firmware (LCOS) is available on the device's WEBconfig interface under "Extras > License information". If the respective license demands, the source files for the corresponding software components will be made available on a download server upon request.

Hereby, LANCOM Systems GmbH | Adenauerstrasse 20/B2 | D-52146 Wuersele, declares that this device is in compliance with Directives 2014/30/EU, 2014/53/EU, 2014/35/EU, 2011/65/EU, and Regulation (EC) No. 1907/2006. The full text of the EU Declaration of Conformity is available at the following Internet address: [www.lancom-systems.com/doc](http://www.lancom-systems.com/doc)



**LANCOM**  
SYSTEMS



Cloud-ready