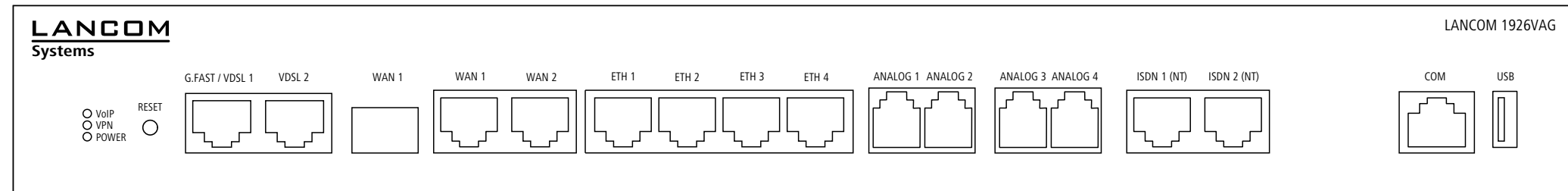
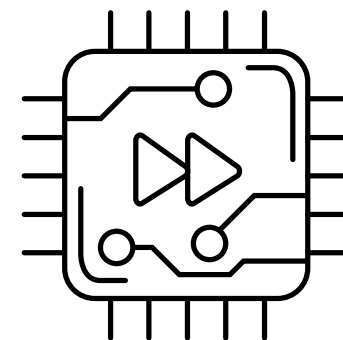


Hardware Quick Reference LANCOM 1926VAG



1 Reset button

Short press > Restart the device
Long press > Reset the device

2 G.FAST- / VDSL- / ADSL interfaces*

If required, use the supplied DSL cables for the IP-based line to connect each G.FAST / VDSL / ADSL interface to a separate provider's telephone socket. For more information, please contact your Internet service provider.

* Please use the appropriate cables depending on the design

3 WAN 1 interfaces (SFP / TP combo port)

Insert a suitable SFP module (e.g. 1000Base-SX or 1000Base-LX) into the SFP port. Choose a cable compatible with the SFP module and connect it as described in the module's documentation. SFP module and cable are not included.
If desired, alternatively connect the WAN 1 TP interface to a WAN modem using an ethernet cable.

4 WAN 2 interface (TP)

Connect the WAN 2 interface to a WAN modem using an Ethernet cable.

5 Ethernet interface

Use the cable with the kiwi-colored connectors to connect one of the interfaces ETH 1 to ETH 4 to your PC or a LAN switch.



6 Analog interfaces

Connect analog terminal devices to the analog interfaces either directly via RJ11 or with the help of the enclosed TAE adapters.

7 ISDN interfaces

ISDN 1: Internal (NT) ISDN bus.
ISDN 2: Internal (NT) ISDN-bus.

A 100-Ohm resistor for line termination is switchable in LCOS.

8 Configuration interface

Use the included serial configuration cable to connect the serial interface (COM) to the serial interface of the device you want to use for configuring / monitoring.

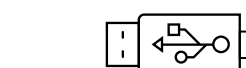
9 USB interface

You can use the USB interface to connect a USB printer or a USB storage device.

10 Power connector and grounding point (device back side)

Supply power to the device via the power connector. Please use the IEC power cable supplied (separately available for WW devices).

11 ATTENTION: High touch current possible! Connect to earth before connecting the power supply.



Before initial startup, please make sure to take notice of the information regarding the intended use in the enclosed installation guide!

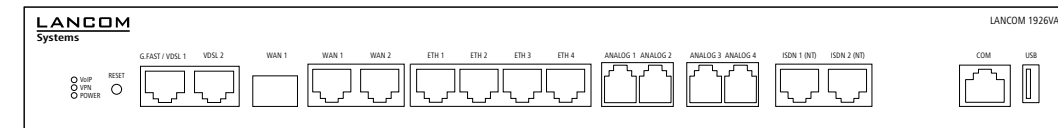
Operate the device only with a professionally installed power supply at a nearby power socket that is freely accessible at all times.



Please observe the following when setting up the device

- The power plug of the device must be freely accessible.
- For devices to be operated on the desktop, please attach the adhesive rubber footpads
- Do not rest any objects on top of the device
- Keep all ventilation slots on the side of the device clear of obstruction
- Mount the device into a 19" unit in a server cabinet using the provided screws and mounting brackets. Pay attention to the "R" and "L" marks on the brackets for accurate mounting.
- Please note that support service for third-party accessories is excluded.

Mounting & connecting



1 VoIP / VPN / POWER

VoIP
Off No SIP accounts defined or VCM is off
Green, permanently All defined and active SIP accounts (outgoing) were successfully registered
Red, permanently Not all of the defined and active SIP accounts were registered (possibly still in process)

Red or green, inverse flashing Number of currently used lines (connecting or connected)

VPN
Off VPN connection inactive
Green, permanently VPN connection active
Green, flashing VPN connecting

POWER
Off Device switched off
Green, permanently* Device operational, resp. device paired / claimed and LANCOM Management Cloud (LMC) accessible

Green / red, blinking No password set. Without a password the configuration data in the device is unprotected.

Red, blinking Charge or time limit reached
1x green inverse blinking* Connection to the LMC active, pairing OK, device not claimed
2x green inverse blinking* Pairing error, resp. LMC activation code not available
3x green inverse blinking* LMC not accessible, resp. communication error

Green, permanently* Device operational, resp. device paired / claimed and LANCOM Management Cloud (LMC) accessible

Green, permanently* Device operational, resp. device paired / claimed and LANCOM Management Cloud (LMC) accessible

Green, permanently* Device operational, resp. device paired / claimed and LANCOM Management Cloud (LMC) accessible

Green, permanently* Device operational, resp. device paired / claimed and LANCOM Management Cloud (LMC) accessible

Green, permanently* Device operational, resp. device paired / claimed and LANCOM Management Cloud (LMC) accessible

Green, permanently* Device operational, resp. device paired / claimed and LANCOM Management Cloud (LMC) accessible

Green, permanently* Device operational, resp. device paired / claimed and LANCOM Management Cloud (LMC) accessible

Green, permanently* Device operational, resp. device paired / claimed and LANCOM Management Cloud (LMC) accessible

Green, permanently* Device operational, resp. device paired / claimed and LANCOM Management Cloud (LMC) accessible

Green, permanently* Device operational, resp. device paired / claimed and LANCOM Management Cloud (LMC) accessible

Green, permanently* Device operational, resp. device paired / claimed and LANCOM Management Cloud (LMC) accessible

Green, permanently* Device operational, resp. device paired / claimed and LANCOM Management Cloud (LMC) accessible

Green, permanently* Device operational, resp. device paired / claimed and LANCOM Management Cloud (LMC) accessible

Green, permanently* Device operational, resp. device paired / claimed and LANCOM Management Cloud (LMC) accessible

Green, permanently* Device operational, resp. device paired / claimed and LANCOM Management Cloud (LMC) accessible

Green, permanently* Device operational, resp. device paired / claimed and LANCOM Management Cloud (LMC) accessible

Green, permanently* Device operational, resp. device paired / claimed and LANCOM Management Cloud (LMC) accessible

Green, permanently* Device operational, resp. device paired / claimed and LANCOM Management Cloud (LMC) accessible

Green, permanently* Device operational, resp. device paired / claimed and LANCOM Management Cloud (LMC) accessible

Green, permanently* Device operational, resp. device paired / claimed and LANCOM Management Cloud (LMC) accessible

Green, permanently* Device operational, resp. device paired / claimed and LANCOM Management Cloud (LMC) accessible

Green, permanently* Device operational, resp. device paired / claimed and LANCOM Management Cloud (LMC) accessible

Green, permanently* Device operational, resp. device paired / claimed and LANCOM Management Cloud (LMC) accessible

Green, permanently* Device operational, resp. device paired / claimed and LANCOM Management Cloud (LMC) accessible

Green, permanently* Device operational, resp. device paired / claimed and LANCOM Management Cloud (LMC) accessible

Green, permanently* Device operational, resp. device paired / claimed and LANCOM Management Cloud (LMC) accessible

Green, permanently* Device operational, resp. device paired / claimed and LANCOM Management Cloud (LMC) accessible

Green, permanently* Device operational, resp. device paired / claimed and LANCOM Management Cloud (LMC) accessible

Green, permanently* Device operational, resp. device paired / claimed and LANCOM Management Cloud (LMC) accessible

Green, permanently* Device operational, resp. device paired / claimed and LANCOM Management Cloud (LMC) accessible

Green, permanently* Device operational, resp. device paired / claimed and LANCOM Management Cloud (LMC) accessible

Green, permanently* Device operational, resp. device paired / claimed and LANCOM Management Cloud (LMC) accessible

Green, permanently* Device operational, resp. device paired / claimed and LANCOM Management Cloud (LMC) accessible

Green, permanently* Device operational, resp. device paired / claimed and LANCOM Management Cloud (LMC) accessible

Green, permanently* Device operational, resp. device paired / claimed and LANCOM Management Cloud (LMC) accessible

Green, permanently* Device operational, resp. device paired / claimed and LANCOM Management Cloud (LMC) accessible

* The additional power LED statuses are displayed in 5-seconds rotation if the device is configured to be managed by the LANCOM Management Cloud.

This product contains separate open-source software components which are subject to their own licenses, in particular the General Public License (GPL). The license information for the device firmware (LCOS) is available on the device's WEBconfig interface under "Extras > License information". If the respective license demands, the source files for the corresponding software components will be made available on a download server upon request.

Hardware

Power supply Internal power supply unit (100–240 V, 50-60 Hz)

Power consumption Max. 34 W

Environment Temperature range 0–40 °C, humidity 0–95 %; non-condensing

Housing Robust metal housing, 1 HU with mounting brackets for 19" installation, 345 × 44 × 253 mm (W × H × D)

Number of fans 1 quiet fan

Interfaces

G.FAST / VDSL 1 / VDSL 2 G.FAST acc. to ITU G.9700 and G.9701, profiles 106a, 212a
VDSL2 acc. to ITU G.993.2, profiles 8a, 8b, 8c, 8d, 12a, 12b, 17a, 35b
VDSL2 supervectoring acc. to ITU G.993.2 (Annex Q)
VDSL2 vectoring: acc. to ITU G.993.5 (G.Vector)
Compatible with VDSL2 from Deutsche Telekom
Compatible with the U-R2 connection of Deutsche Telekom (1TR12)
ADSL2+ over ISDN acc. to ITU G.992.5 Annex B/J with DPBO, ITU G.992.3 and ITU G.992.1
ADSL2+ over POTS acc. to ITU G.992.5 Annex A/M with DPBO, ITU G.992.3 and ITU G.992.1
Supports only one virtual connection in ATM (VPI-VCI pair) at a time
Automatic detection of Deutsche Telekom VDSL connections with VLAN ID 7

WAN 1 / WAN 2 WAN 1 SFP: Compatible with optional LANCOM SFP modules. Set as a WAN port ex-factory, can be configured as a LAN port.
WAN 1 / WAN 2 TP: 10 / 100 / 1000 Base-TX, autosensing full duplex (WAN 1) / autosensing (WAN 2), auto node hub

ETH1 - ETH 4 4 individual ports, 10 / 100 / 1000 Mbps Gigabit Ethernet, by default set to switch mode. Up to 3 ports can be operated as additional WAN ports. Ethernet ports can be electrically disabled in the LCOS configuration.

Analog 1 - Analog 4 Use the cables of your analog devices to connect them with the analog interfaces. If necessary, use the enclosed adapters.

ISDN 1 / ISDN 2 ISDN 1: Internal (NT) ISDN bus. Connect the ISDN interface to an ISDN cable and the ISDN device.
ISDN 2: Internal (NT) ISDN bus. Connect the ISDN interface to an ISDN cable and the ISDN device.

Config (Com) / V.24 Serial configuration interface / COM-port: 9,600 - 115,200 baud

USB USB 2.0 hi-speed host port for connecting USB printers (USB print server), serial devices (COM-port server) or USB drives (FAT file system)

WAN protocols
G.Fast, VDSL, ADSL, Ethernet PPPoE, Multi-PPPoE, ML-PPP, PPTP (PAC or PNS) and IPoE (with or without DHCP), RIP-1, RIP-2, VLAN, GRE, EoGRE, L2TPv2 (LAC or LNS), IPv6 over PPP (IPv6 and IPv4/IPv6 dual stack session), IP(v6)oE (autoconfiguration, DHCPv6 or static)

ISDN DSS1 (Euro-ISDN), PPP, X75, HDLC, ML-PPP, V.110/GSM/HSCSD

Package content

Cables 2 DSL cables for IP-based connection, 4.25 m, or 2 DSL cables, 3 m (dark blue connectors), depending on the version;
1 Ethernet cable, 3 m (kiwi colored connectors); 1 IEC power cord 230 V (not for WW devices)

Adapters 4 TAE adapters (RJ11 - TAE)

Mounting brackets Two 19" brackets for rack mounting

Hereby, LANCOM Systems GmbH | Adenauerstrasse 20/B2 | D-52146 Wuersele, declares that this device is in compliance with Directives 2014/30/EU, 2014/53/EU, 2014/35/EU, 2011/65/EU, and Regulation (EC) No. 1907/2006. The full text of the EU Declaration of Conformity is available at the following Internet address: www.lancom-systems.com/doc